

**KASKO TONDO PICCOLO 8310 100W E27**IP65   230-250 V 50-60 Hz

Class I

Glow wire 960°

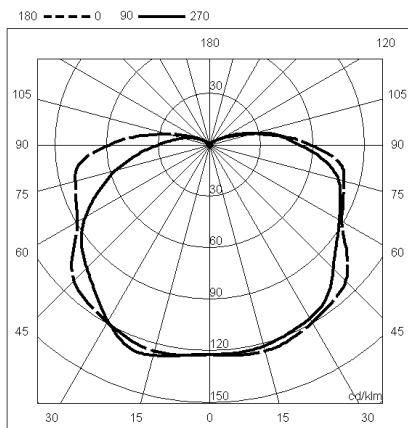
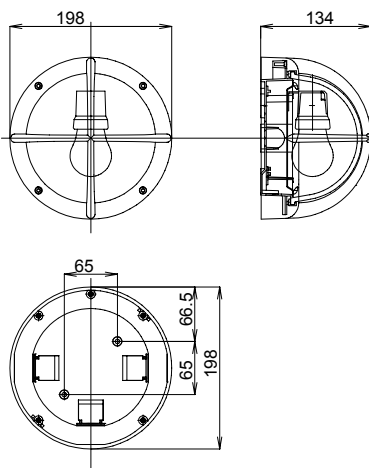
Impact test: 6 joules

Test report n.° 04AF00089/1 CENELEC

Electromagnetic compatibility CEE 89/336 - EN 55015 III Ed. - EN 61000 - 3 - 2

**goccia**  
ILLUM NAZIONE

E27 - 100W

**Definition and application**

**Weatherproof round lighting fitting in die-cast aluminium, with cross guard, seamless between guard and installation surface, 4 stainless steel allen key screws, hemispheric opal glass diffuser, "U" gasket. To be installed on wall, ceiling or on garden post.**

Designed for private or public areas, it may be installed on walls, with inclined support too, or ceilings, or post for garden use. It can be safely used on flammable surfaces.

**Lighting source:**

E27 lampholder 100W

Illuminance level: **1200** LumenLife: **1000** hTonality: **2700°** K warm**Description**

Housing and cover in die-cast aluminium.

Stainless steel allen key screws M5 and 3,7x10x1 polyethylene washers.

Sodic calcic tempered opal glass diffuser, smooth inside

Silicone gasket, corrosion resistant

Tripolar Terminal block, in red nylon with glass fibre

O. Körner 4176328 + O. Körner OK 4176327

Componentsholder reflector in 99,8 aluminium, covered with protective pellicle.

Fixing cross-head screws

Lampholder: VOSSLOH E27 ceramic, on steel bracket with M3x6 screws.

Wiring: mm<sup>2</sup> 1 cables, silicone insulator.**Finish**

Pickling, phosphochrome, polyester powder coating, UV resistant  
+ (only silver and anthracite) transparent coating UV resistant

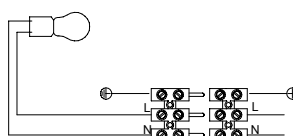
**Photometry**Efficiency  $\eta = 67\%$ 

The polar diagram shows a diffuse lighting: the lamp, oriented downwards, gives a very good lighting without the lampholder shade.

**Installation:**

With two fixing holes in the base

Cable entry from the rear, from the side, or from the top through PG11 and IP 68 cable gland



Wiring diagram